



NCA WORLD WATER DAY 2023 ACCELERATING CHANGE



By: Manfred Arlt



NORWEGIAN CHURCH AID
actalliance

NCA 75 YEARS

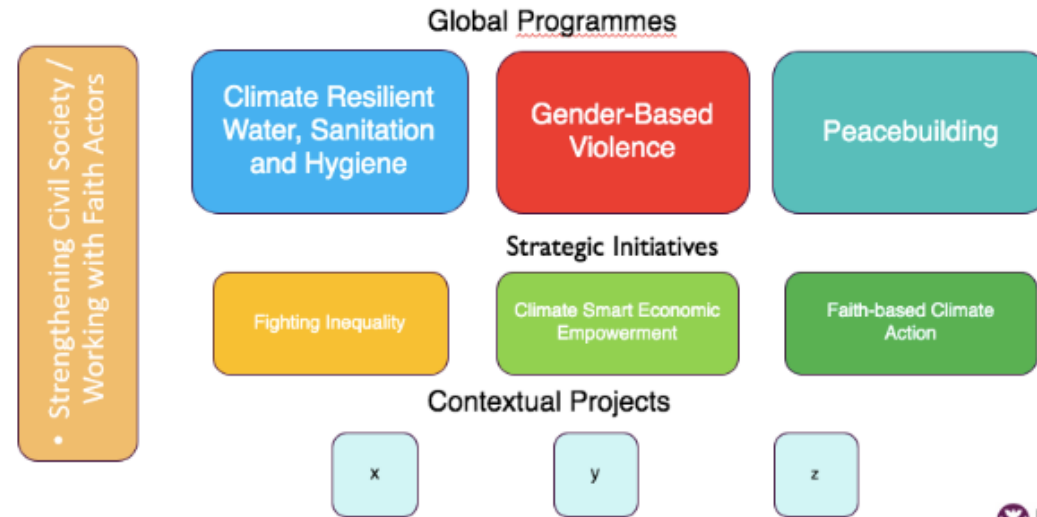
UN SDG Universal Values

Principle One: Human Rights-Based Approach

Principle Two: Leave No One Behind

Principle Three: Gender Equality and Women's Empowerment

NCA PROGRAMME FRAMEWORK 2020 - 2030



 **NORWEGIAN CHURCH AID**
actalliance

CRWASH Goal:
People live in healthy and resilient communities by accessing equitable water, sanitation and hygiene services in an informed and sustainable manner

Sub-goal 1: People participate in and influence decision making about all WASH services that affect them, including how water resources are sustainably managed

Sub-goal 2: People prepare and respond to climate-related hazards and natural disasters affecting WASH services

Sub-goal 3: People practice good hygiene measures to protect against key public and personal health risks

Sub-goal 4: People access sustainable, adequate and equitable basic sanitation services

Sub-goal 5: People access sustainable, safe and affordable basic drinking water supply services



NORWEGIAN CHURCH AID
actalliance

NCA 75 YEARS

ACCELERATING CHANGE TOWARDS

SDG 6 Ensure availability and sustainable management of water and sanitation for all

Target: 6.1 By 2030, achieve universal and equitable access to safe and affordable drinking water for all

Indicator: 6.1.1 Proportion of population using safely managed drinking water services

The new JMP ladder for household drinking water services

Service level	Definition
Safely managed	Drinking water from an improved water source which is located on premises, available when needed and free of faecal and priority chemical contamination
Basic	Drinking water from an improved source provided collection time is not more than 30 minutes for a roundtrip including queuing
Limited	Drinking water from an improved source where collection time exceeds over 30 minutes for a roundtrip to collect water, including queuing
Unimproved	Drinking water from an unprotected dug well or unprotected spring
No service	Drinking water collected directly from a river, dam, lake, pond, stream, canal or irrigation channel

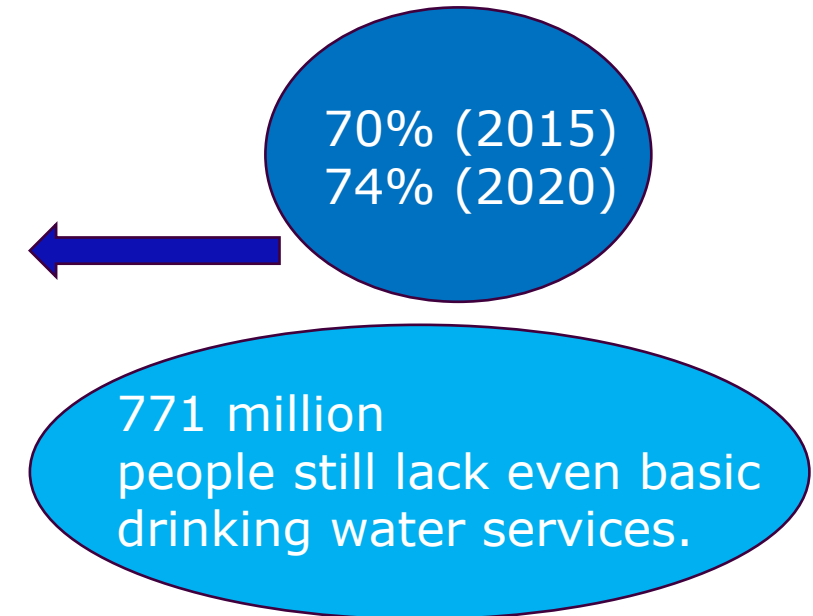


FIGURE 1 JMP service ladder for household drinking water

Achieving the SDG global target 6.1 by 2030 will require a **fourfold increase** in the current rate of progress.

The **SDG 6 Global Acceleration Framework** ... aims to deliver fast results, at an increased scale, towards the goal ...

... the ... Framework mobilizes UN agencies, governments, civil society, private sector, ... around five cross-cutting and interdependent '**accelerators**':

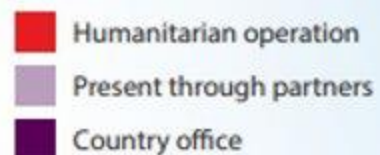
- **Financing** - Optimized financing is essential ...
- **Data and information** - ...targets resources and measures progress.
- **Capacity development** - .. of workforce improves service levels ...
- **Innovation** - ..of practices and technologies will improve water and sanitation resources management and service delivery.
- **Governance** - Collaboration across boundaries and sectors...



Countries where NCA is present

NCA's long-term Development CRWASH in 2023:

1. Mali
2. Sudan
3. South Sudan
4. Somalia
5. Ethiopia
6. Afghanistan
7. Pakistan
8. Haiti



NCA's Humanitarian WASH in 2023:

1. Ukraine / Russian, war
2. Syria, earthquake
3. Pakistan, flood
4. Afghanistan, IDPs
5. Sudan, refugees & IDPs
6. South Sudan, conflict
7. Ethiopia, conflict
8. Somalia conflict
9. DR Congo conflict
10. Burkina Faso/Mali conflicts,
11. Nigeria conflict

DONORS:

NORAD, NMFA

ECHO, USAID

UNDP, UNICEF, UNHCR, UNOCHA

ACT ALLIANCE PARTNERS

PRIVATE DONORS



In order to achieve the SDG6, it is essential not to forget **populations living in Fragile, Conflict and Violent settings (FCV)**

- FCV accounts for a quarter (24%) of the world's population but three-quarters (73%) of people living in extreme poverty worldwide





Climate change challenges:
Climate Resilient Water Supply in Integrated Program, Afajehegn village, Ankober district, Ethiopia
Donor: NORAD



Financing - Optimized financing is essential ...

Private sector financing such as for instance our Rural Water supply and Production of menstrual sanitary pads in South Ari district, Ethiopia

Financed: Knorr-Bremse Global Care Foundation, Germany, King Coffee Norway and Norwegian Church Aid



Water supply Woset village, South Ari, Ethiopia



Women group producing reusable sanitary pads, Getzer village, South Ari - market-based approach.



Privat donors:
Knorr-Bremse
Global Care
Foundation,
Germany, King
Coffee Norway
and Norwegian
Church Aid



NCA and Private Sector Donors for CRWASH

- Well Wishers Australia
- Balder Foundation, Norway

Solar Powered Water Supply,
West Kordofan, Sudan
2016, NRK Telethon Fund





Thanks for your attention

Q & A

06/12/2016